

Supply Chain Management

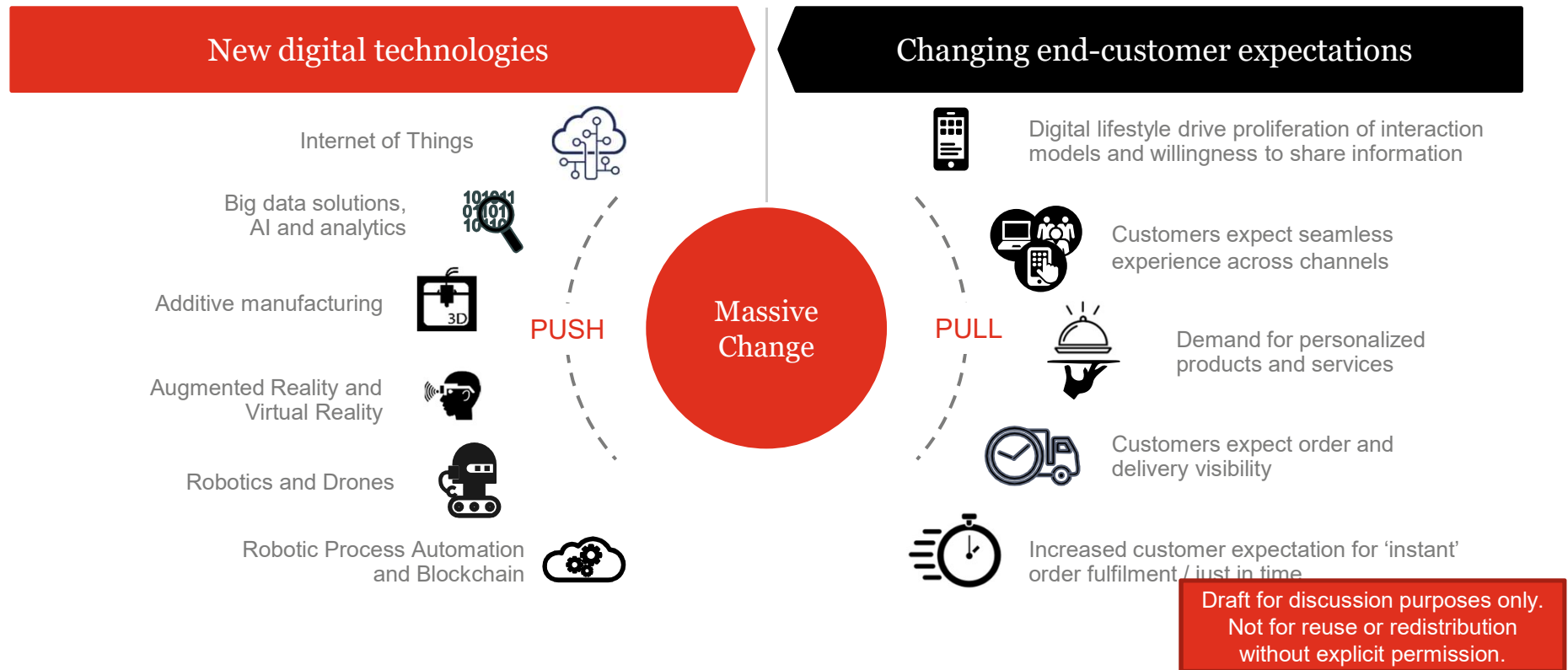
Do you have a little security in your Supply Chain?

January 2020



Draft for discussion purposes only.
Not for reuse or redistribution
without explicit permission.

We are now at a point of convergence of technology capabilities, operational requirements and customer expectations



A perfect storm to open the security vulnerabilities and risks flood gates

Ransomware

Artificial and Machine Learning
- Driven Attacks

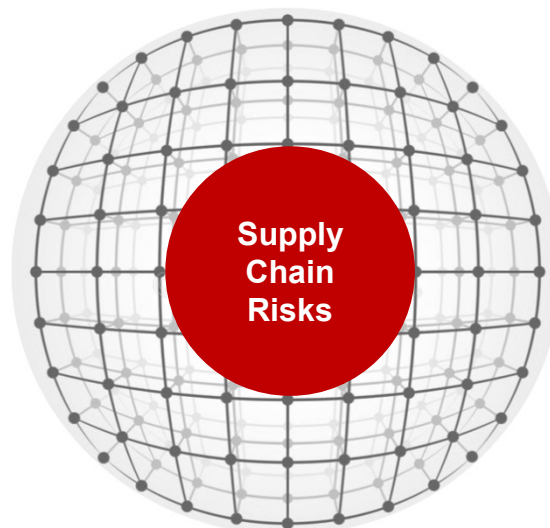
Social Engineering

Third Parties

Product Malware

Internal Security Incident

“Island Hopping”
Network-based attacks



Cyber attacks are one of the top drivers
impact suppl chains
Supply Chain Insights Survey

Organization Security Posture is the state or process of protecting and recovering operation, applications or data from any types of security attacks

Third Party Risk Management
TPRM is focused on understanding and managing the risks associated with doing business and/or sharing data with external third parties.

Draft for discussion purposes only.
Not for reuse or redistribution
without explicit permission.

Product Security (Physical / Digital)
A superset of application security, infrastructure security, and incident response around a particular product or system

What is IA's role in Supply Chain Security Management

Supply Chain Design

• **Planning** • **Operations** • **Production** • **Service** • **Distribution** • **Integration**

Organization Security

- Maturity Assessments (e.g. Nist)
 - Identify
 - Protect
 - Detect
 - Respond
 - Recover
- Security and Privacy Design (e.g. Identity Access Management, Business Continuity, Disaster Recovery, Data Governance)

TPRM

- Governance
- Planning (Business Case / Inherent Risk)
- Due Diligence (Assessment)
- Contracting
- Ongoing Monitoring
- Termination

Product Security

- Physical vs Digital
- Sourcing / Contracting
- R&D
- Due Diligence (Assessment)
- QA
- Ongoing Monitoring

Draft for discussion purposes only.
Not for reuse or redistribution
without explicit permission.